

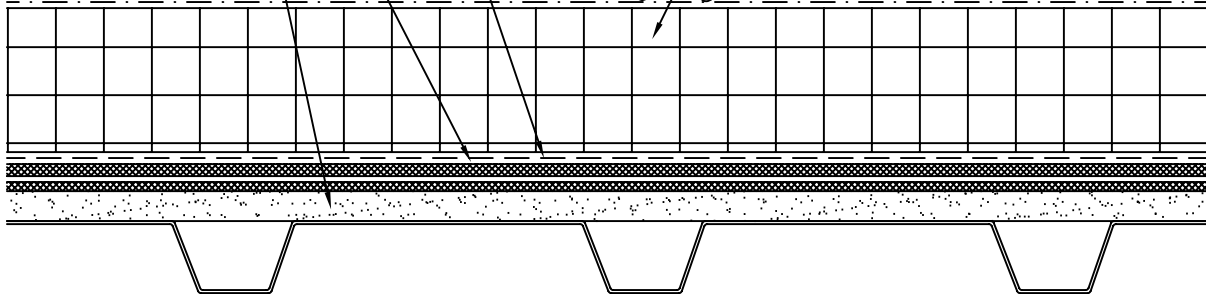
HYDROFLEX 10 SEPARATION SHEET  
OR OTHER APPROVED PROTECTION

MONOLITHIC MEMBRANE  
6125-FR

5/8" SECUROCK OR  
OTHER APPROVED  
SUBSTRATE BOARD

STYROFOAM INSULATION

APPROPRIATE SURFACING—  
STONE OR PAVER BALLAST,  
HYDROGUARD, GARDEN ROOF

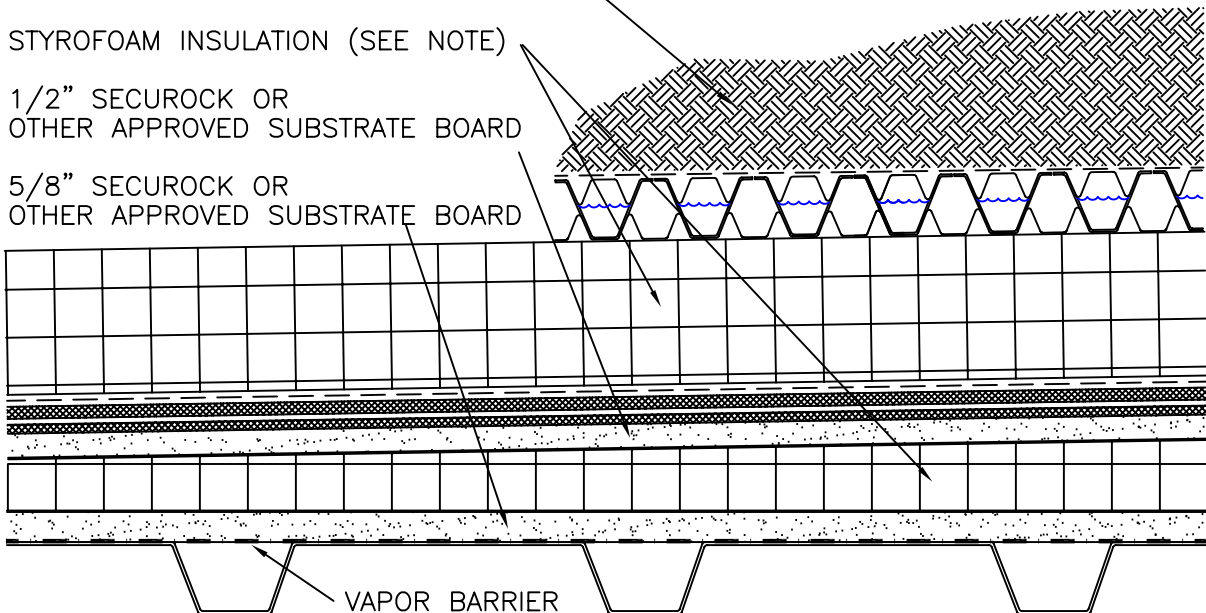


APPROPRIATE SURFACING—  
GARDEN ROOF, HYDROGUARD, STONE/  
PAVER BALLAST

STYROFOAM INSULATION (SEE NOTE)

1/2" SECUROCK OR  
OTHER APPROVED SUBSTRATE BOARD

5/8" SECUROCK OR  
OTHER APPROVED SUBSTRATE BOARD



VAPOR BARRIER

NOTES: ADEQUATE STRUCTURAL SUPPORTS AND THE NUMBER AND TYPE OF FASTENERS  
REQUIRED TO COMPLY WITH APPLICABLE CODES, SHOULD BE DETERMINED  
AND VERIFIED BY PROJECT ARCHITECT/ENGINEER.

ADDITIONAL REINFORCING (MM 6125 W/6" WIDE FLEX-FLASH F) IS REQUIRED  
OVER SUBSTRATE BOARD JOINTS FOR EXTENDED (10+ YEARS) WARRANTIES.  
(REF. DETAIL R-5A)

WHEN INSULATION IS INSTALLED BOTH ABOVE AND BELOW THE MEMBRANE, THE  
R VALUE OF THE INSULATION ABOVE MUST BE GREATER THAN THE LOWER LAYER.

THE NEED FOR A VAPOR BARRIER BETWEEN THE SUBSTRATE BOARD AND THE  
METAL DECK SHOULD BE DETERMINED AND VERIFIED BY PROJECT ARCHITECT/ENGINEER.



Monolithic  
Membrane  
6125-FR  
ROOFING SYSTEMS

AMERICAN HYDROTECH, INC.

ALTERNATE SUBSTRATE  
APPLICATIONS

3"=1'-0"

R-5B